

UNI-80503
Nikon 1



Construction

Aluminum Casting
Less than 0.1% copper content - Marine Grade 6062 extruded & LMS Aluminum High Pressure die casting provides excellent mechanical strength, clean detailed product lines and excellent heat dissipation.

Pre-paint
8 step degrease and phosphate process that includes anodizing and etching as well as a zinc and nickel phosphate process before product painting.

Memory Retention - Silicon Gasket
Provided with special injection molded "fit for purpose" long life high temperature memory retentive silicon gaskets. Maintains the gaskets exact profile and seal over years of use and compression.

Thermal Management
LMS Aluminum is used for its excellent mechanical strength and thermal dissipation properties in low and high ambient temperatures. The superior thermal heat sink design by Ligman used in conjunction with the gaskets, controls thermal below critical temperature range to ensure maximum luminous flux output, as well as providing long LED service life and ensuring less than 10% lumen depreciation at 50,000 hours.

Surge Suppression
Standard 10kV surge suppressor provided with all fixtures.

BUG Rating

91 - 100 - 50

Finishing

All Ligman products go through an extensive finishing process that includes fettling to improve paint adherence.

Paint

UV Stabilized 4.0Ml thick powder coat paint and baked at 200 Deg C. This process ensures that Ligman products can withstand harsh environments. Rated for use in natatoriums.

Hardware

Provided Hardware is Marine grade 316 Stainless steel.

Anti-Seize Screw Holes
Tapped holes are infused with a special anti-seize compound designed to prevent seizure of threaded connections, due to electrolysis from heat, corrosive atmospheres and moisture.

Crystal Clear Low Iron Glass Lens
Provided with tempered, impact resistant crystal clear low iron glass ensuring no green glass tinge.

Optics & LED
Precision optic design provides exceptional light control and precise distribution of light. LED CRI > 80

Lumen - Maintenance Life
LED R90 at 50,000 hours (This means that at least 90% of the LED still achieve 80% of their original flux)

Ceiling-recessed exterior downlights. Modern, clean and powerful downlighting family providing the best resilient under-canopy solutions in the marketplace.

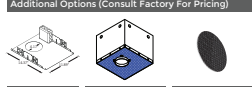
A compact recessed exterior downlight with a round or square front frame design. Options of stainless steel or powder coated aluminum front frame. The luminaires are designed for use in interior and exterior applications. This fixture is totally waterproof. This means that the fixture can be exposed to the elements from above as well as below.

This luminaire is manufactured with integrated heat sink that provides exceptional cooling and heat dissipation ensuring long LED life.

This fixture can also be provided with a concrete pour box for casting into concrete slabs, please see options below. Power is provided to the luminaire through a single PG9 watertight cable gland and 4ft of Outdoor Submersible #18/3 SDOV 600V power cable. Remote mounted transformer. Includes A80191 driver enclosure box.

All Ligman fixtures can be manufactured using a special pre-treatment and coating process that ensures the fixture can be installed in natatoriums as well as environments with high concentrations of chlorine or salt and still maintain the 5 year warranty. For this natatorium rated process please specify NAT in options. Not suitable for saunas and steamrooms.

Additional Options (Consult Factory For Pricing)



RT Rough in Tray CPB Concrete Pour Box HCL Honeycomb Louvre



Cylinder 3000K LED 7" Wall Light Textured Black 11250BKT30 (Textured Black)



Project Name: _____
Location: _____
Type: _____
Qty: _____
Comments: _____

Certifications/Qualifications

Class 2 Yes
Dark Sky Compliant Yes
Location Rating Wet
Title 24 Compliant Yes
www.kichler.com/warranty

Dimensions

Base Backplate 5.00 X 5.00
Depth 6.50"
Weight 2.60 LBS
Height from center of Wall Spacing (Spac. Sheet) 3.25"
Height 7.00"
Width 5.00"

Electrical

Input Voltage Dual (120/140V)

Mounting/Installation

Mounting Exterior
Mounting Style Wall Mount

Photometrics

Color Rendering Index 90
Color Temperature Range 3000
Delivered Efficacy 33 (Lumens/Watt)
Delivered Lumens 350
Kelvin Temperature 3000K

Primary Lamping

Expected Life Span 40000
Lamp Included Integrated
Light Source LED
Max or Nominal Watt 11W
of Bulbs/LED Modules 1

Product/Ordering Information

SKU 11250BKT30
Finish Black
Style Contemporary
UPC 78387453068

Specifications

Material ALUMINUM

Additional Finishes

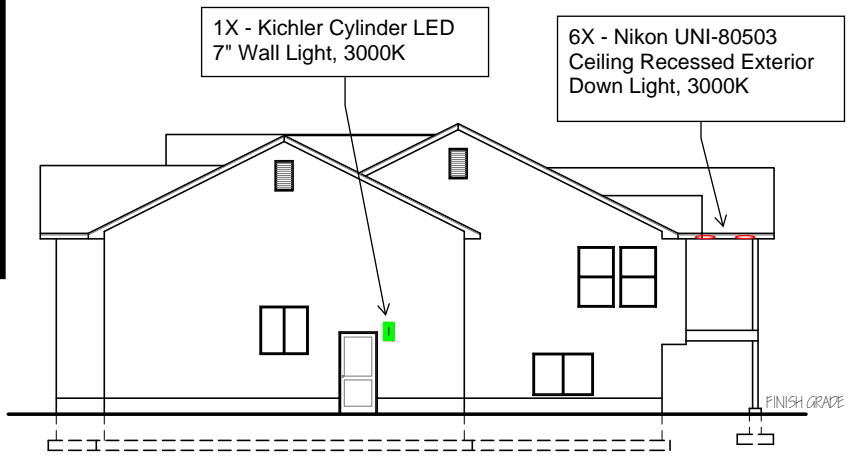
Textured Architectural Bronze
Textured Black

Kichler
771 East Pleasant Valley Road, Cleveland, Ohio 44131-8000
Toll free: 866.558.3766 or kichler.com

Note:
Information provided is subject to change without notice.
All colors are subject to change without notice and are not guaranteed.
©2018 Kichler Lighting. All rights reserved. This document is provided as an informational document and is not intended to be used as a contract.



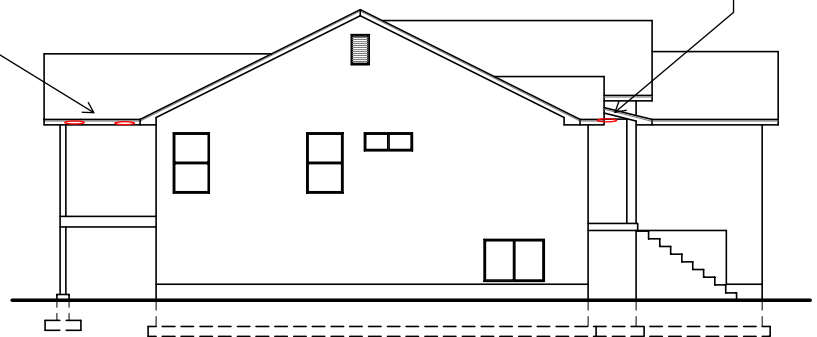
Lighting Legend				
Symbol	Qty	Mfg	Model	Comments
	9	Nikon	UNI-80503	3000K Bulb
	6	Kichler	11250BKT30	3000K Bulb



RIGHT ELEVATION
SCALE 1/16"=1"

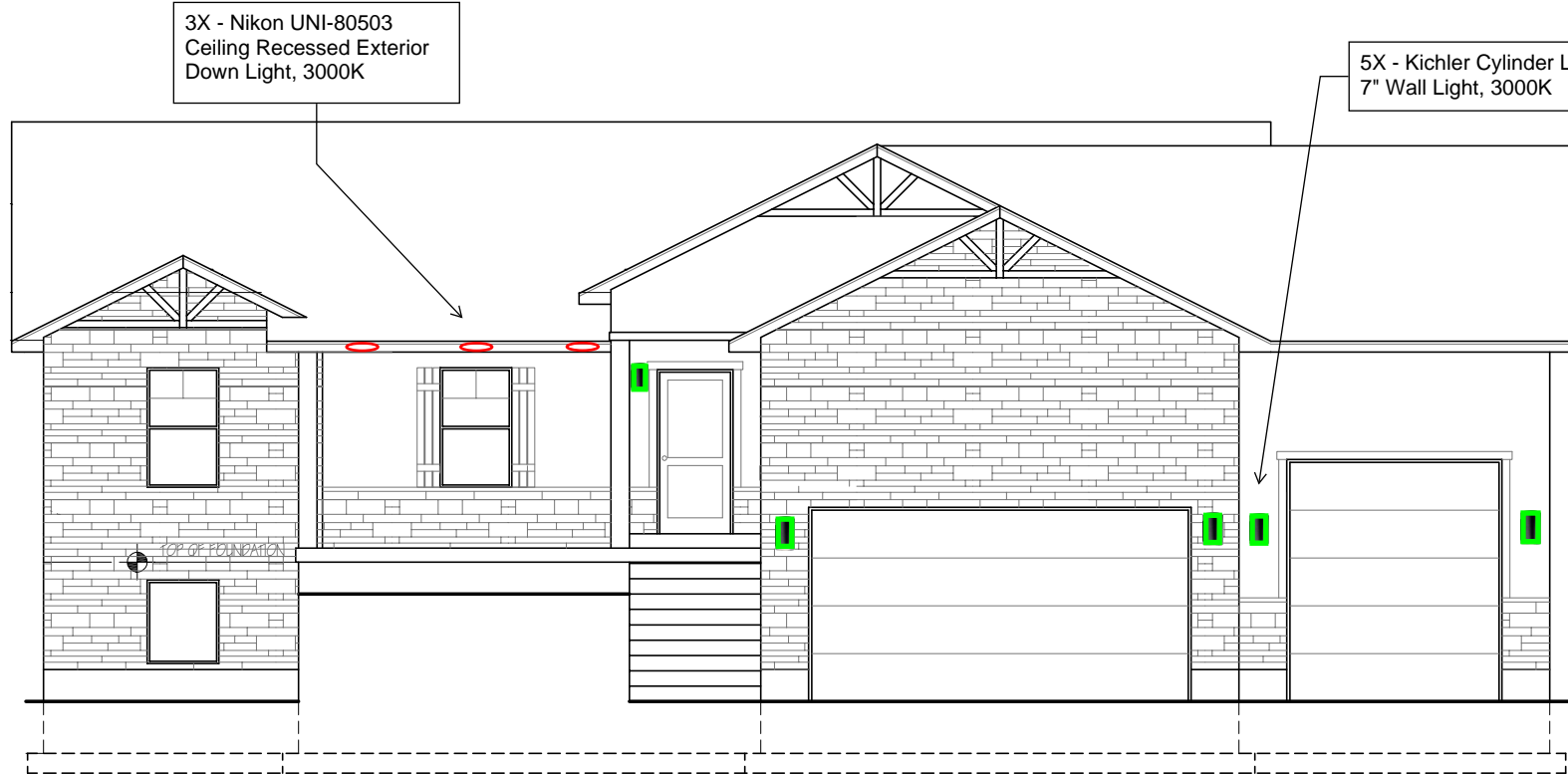
6X - Nikon UNI-80503 Ceiling Recessed Exterior Down Light, 3000K

3X - Nikon UNI-80503 Ceiling Recessed Exterior Down Light, 3000K

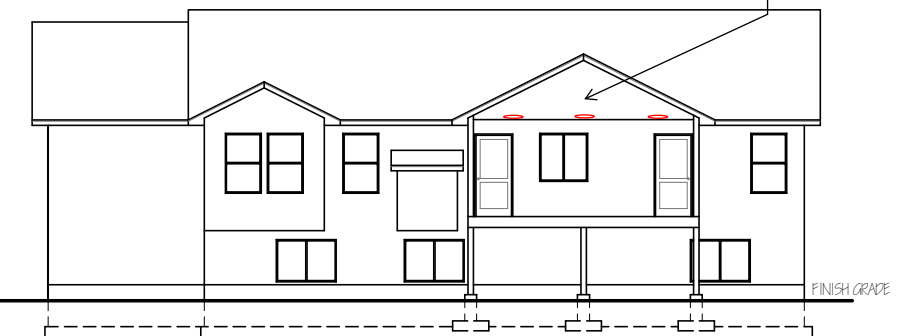


LEFT ELEVATION
SCALE 1/16"=1"

6X - Nikon UNI-80503 Ceiling Recessed Exterior Down Light, 3000K



FRONT ELEVATION



REAR ELEVATION
SCALE 1/16"=1"